

PART 1

LOT

PART 6

3

3

(B) SIB (IBW)

IB (BW)

N45°24'10"E

130.66

285.60

PART 5

PART

P I N 5 1 1 4 0 - 0 1 6 0

P L A N 3 9 R - 1 0 8 9 7

P I N 5 1 1 4 0 - 0 1 5 9

P I N 5 1 1 4 0

N15°52'00"W

PB

IB (IBW)

5.70

PART 3

R=379.61  
A=64.30  
C=64.22  
N76°38'00"W

R=374.43  
A=64.62  
C=64.54  
A=80.99  
C=80.83  
N76°11'00"W  
N74°55'10"W

COUNTY (FORMERLY)

THE (ORDER-IN-COUNCIL

PLAN P-1925-18,

P I N

KING'S ROAD

194/195,

PLAN

INST NC276953)

No. 20254

C O N C E S S I O N

SIB

N74°08'30"E

58.55

SIB

X

X

X

X

X

SIB

PB

SIB (1056)

SIB

SIB

SIB

SIB

SIB

SIB

SIB

SIB

SIB

SIB

SIB

SIB

PART 1

R=379.61  
A,C=20.17  
N70°15'40"W

A,C=16.37  
N69°59'20"W

PART 2

N68°41'30"W

N68°41'30"W

N68°41'30"W

N68°41'30"W

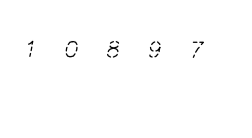
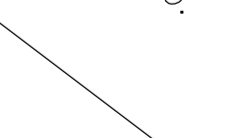
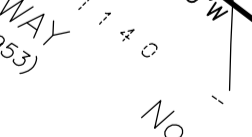
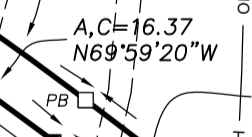
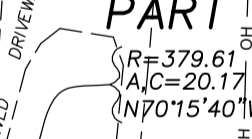
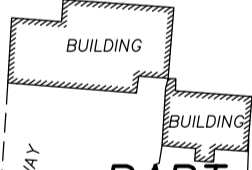
N68°41'30"W

N68°41'30"W

N68°41'30"W

N68°41'30"W

N68°41'30"W



84.50

N15°52'00"W

N15°52'00"W

N15°52'00"W

N15°52'00"W

N15°52'00"W

N15°52'00"W

IB (BW)

285.60

4

4

4

4

4

4

4

4

4

4

4

4

4

4

4

4

4

4

4

4

4

4

4

4

4

4

4

4

4

4

4

4

4

4

IB (BW)

285.60

4

4

4

4

4

4

4

4

4

4

4

4

4

4

4

4

4

4

4

4

4

4

4

4

4

4

4

4

4

4

4

4

4

4

IB (BW)

285.60

4

4

4

4

4

4

4

4

4

4

4

4

4

4

4

4

4

4

4

4

4

4

4

4

4

4

4

4

4

4

4

4

4

4

IB (BW)

285.60

4

4

4

4

4

4

4

4

4

4

4

4

4

4

4

4

4

4

4

4

4

4

4

4

4

4

4

4

4

4

4

4

4

4

IB (BW)

285.60

4

4

4

4

4

4

4

4

4

4

4

4

4

4

4

4

4

4

4

4

4

4

4

4

4

4

4

4

4

4

4

4

4

4

IB (BW)

285.60

4

4

4

4

4

4

4

4

4

4

4

4

4

4

4

4

4

4

4

4

4

4

4

4

4

4

4

4

4

4

4

4

4

4

IB (BW)

285.60

4

4

4

4

4

4

4

4

4

4

4

4

4

4

4

4

4

4

4

4

4

4

4

4

4

4

4

4

4

4

4

4